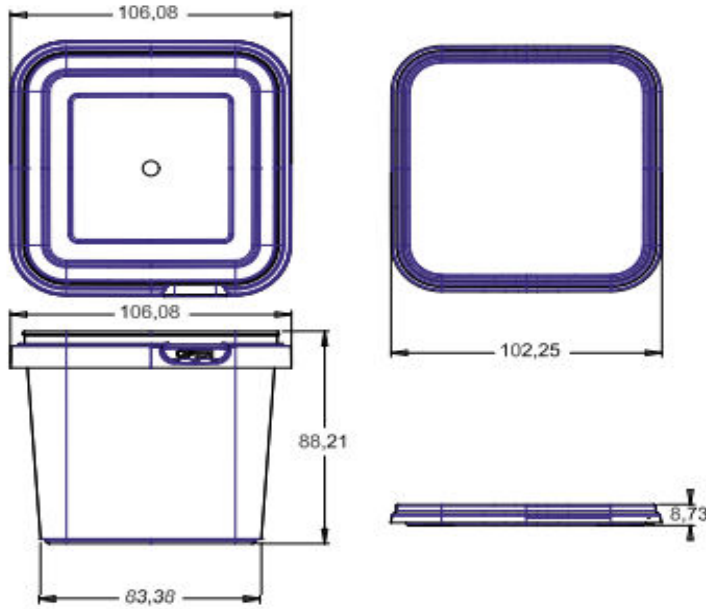


PRODUCT DATA SHEET

DESCRIPTION: PP-IML Container for Food Packaging

TECHNICAL DRAWINGS & PICTURES



MATERIAL, COLOR, QUALITY CONTROL and WEIGHT

Containers and lids are produced by polypropylene in grades approved for food packaging according to New Code for Foodstuff and beverages 1998, Chapter II, Art.26.

Both lid and the container are food grade for human consumption.

DKK600 container and lid can be produced with all colors as per the demand of the customer.

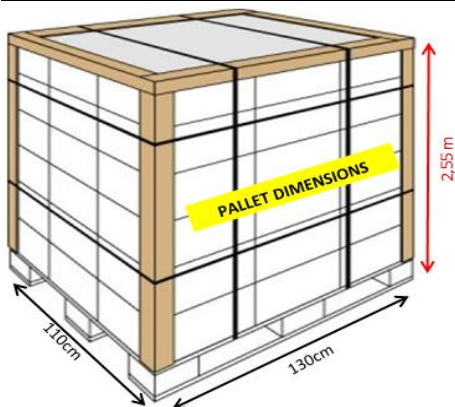
Production is certificated according to EN ISO 9001:2000.

Container: 24 gr ($\pm 5\%$) Lid: 8,5 gr ($\pm 5\%$) Volume: 600 ml

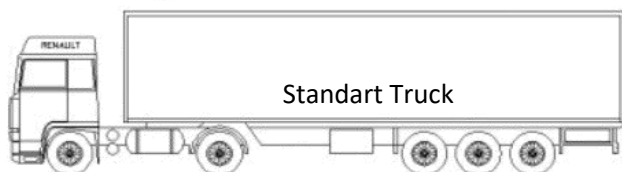
100%
Recyclable
PP Material



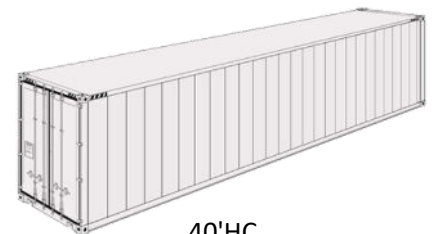
LOGISTIC & PALLETISING



Box Dimensions (tube)	: 55*65*60 cm	(w * l * h)
Box Dimensions (lid)	: 55*43*60 cm	(w * l * h)
Quantity per Box (tube)	: 1.140 pieces	(Set)
Quantity per Box (lid)	: 2.850 pieces	(Set)
Quantity per Pallet (tube)	: 18.240 pieces	(Set)
Quantity per Pallet (lid)	: 68.400 pieces	(Set)
Quantity per Truck	: 288.000 sets	
Quantity per 40'HC Container	: 259.200 sets	
Quantity per 20'DC Container	: 86.400 sets	



20'DC



40'HC